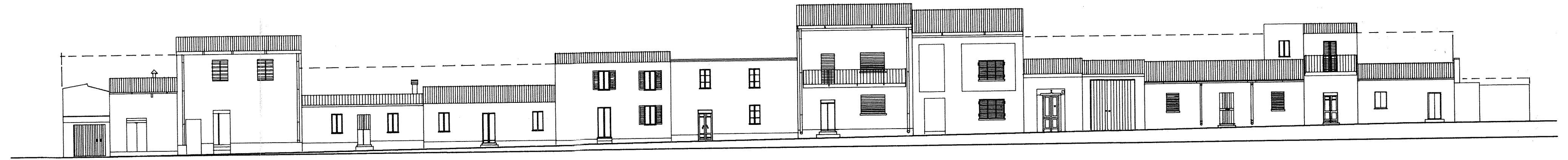


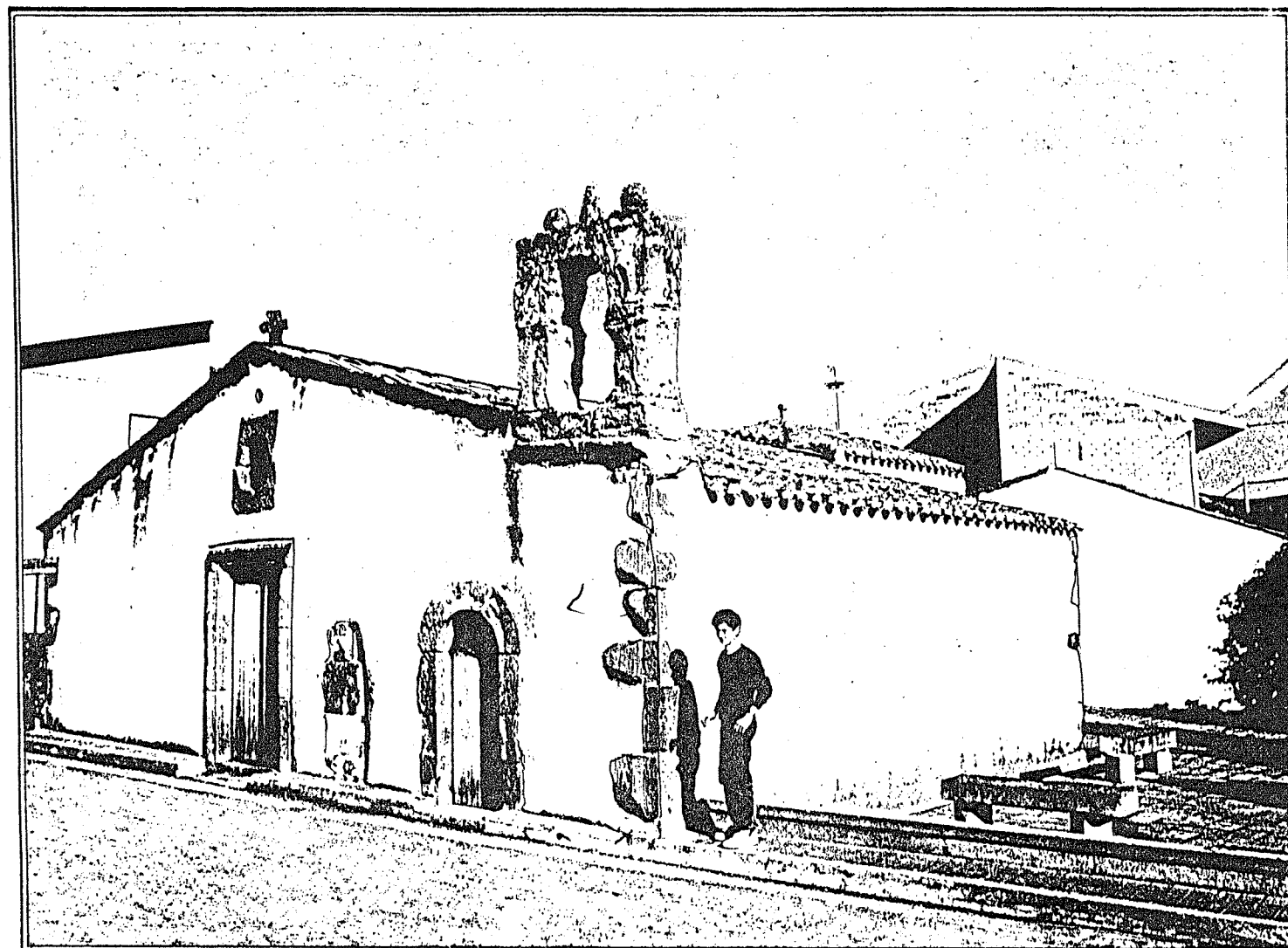
LEGENDA

----- PROFILO REGOLATORE

----- PROFILO 1° PIANO (ARRETRATO)

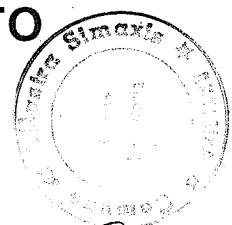


VIA SEBASTIANO SATTA 1



COMUNE DI OLLASTRA SIMAXIS - OR

PIANO PARTICOLAREGGIATO  
DELLA ZONA "A"



STUDIO TECNICO  
Dott. Ing.  
**FRANCESCO SECHI**  
Via Lussu s.n. - Oristano  
Tel. 70325 - 70147  
Partita I.V.A.  
00006830954

PROSPETTI - DAL N.1 AL N.3

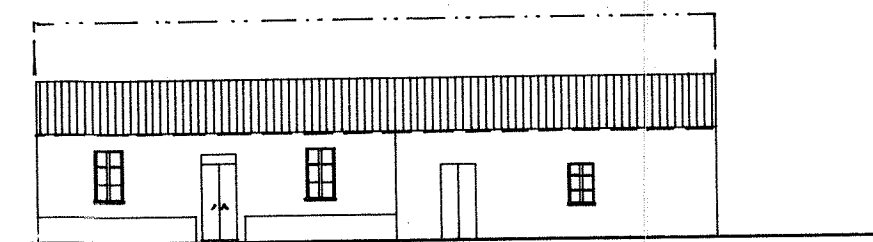
**TAV. 8a**

IL PROGETTISTA (Ing. Francesco Sechi)

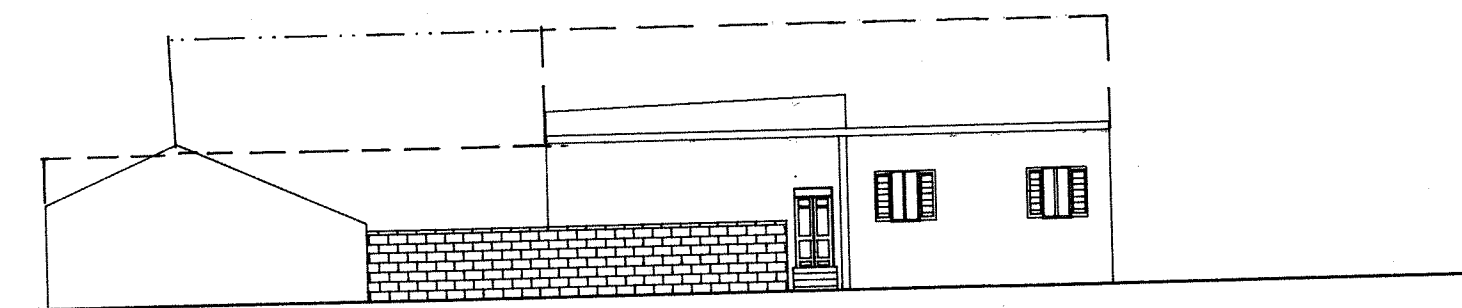
SCALA: 1:200

IL SINDACO (Rag. Dario Sardu)  
IL SEGRETARIO COMUNALE

DATA:  
**15 GIU. 1990**



VIA S. SATTA 2



VIA LAMARMORA 3