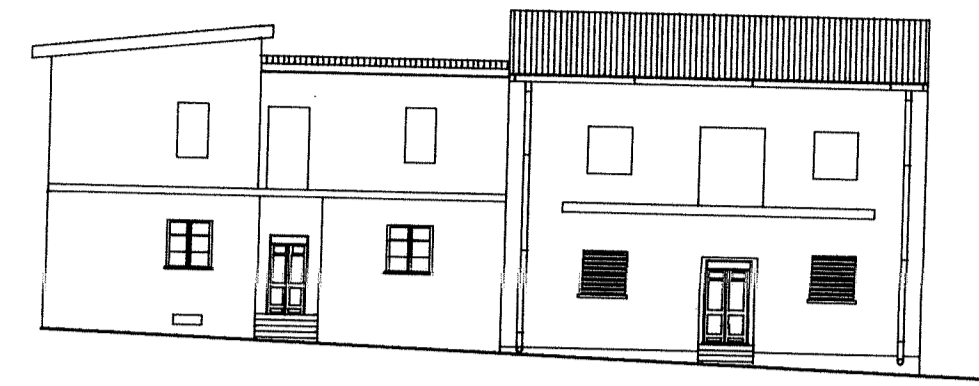
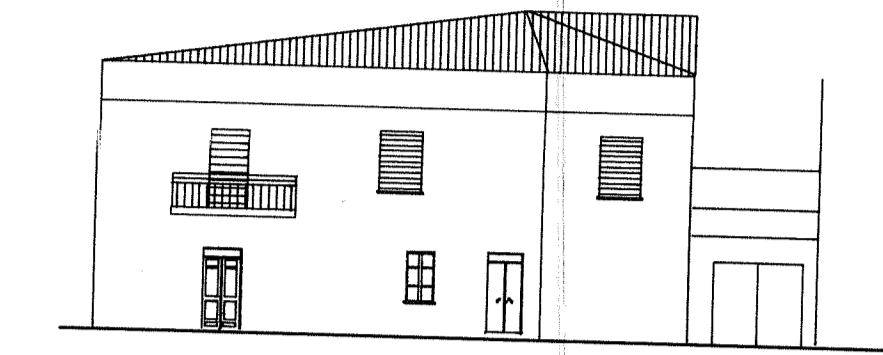


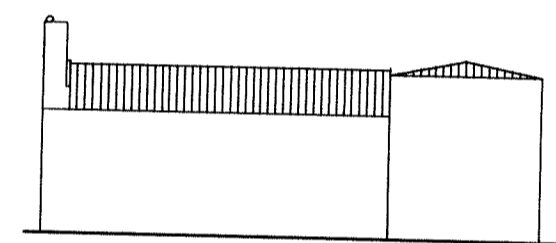
VIA LAMARMORA 4



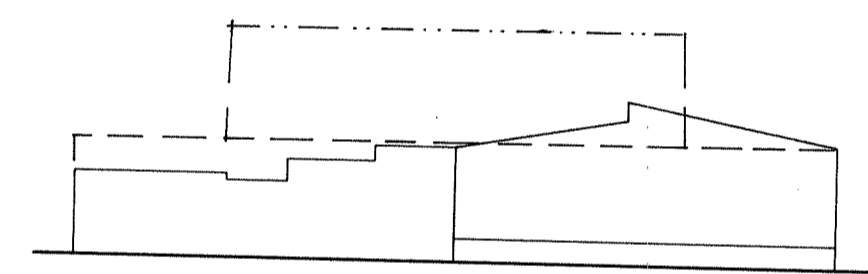
VIA S. SATTA 7



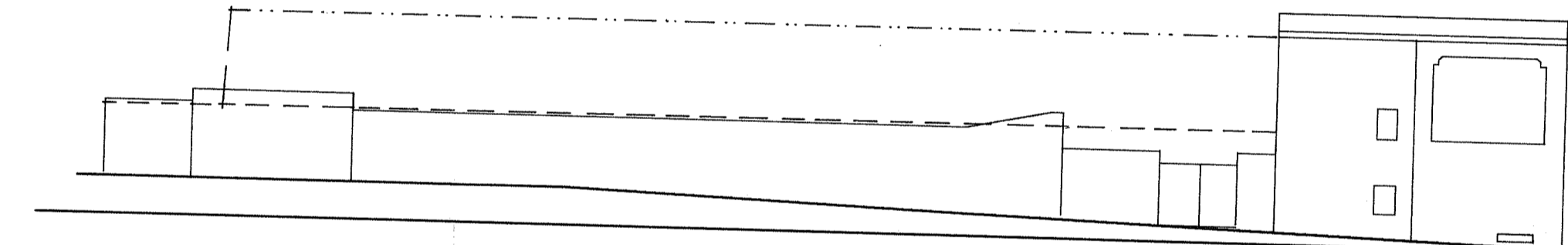
VIA S. SATTA 10



VIA S. SEVERA 5



VIA S. SATTA 8

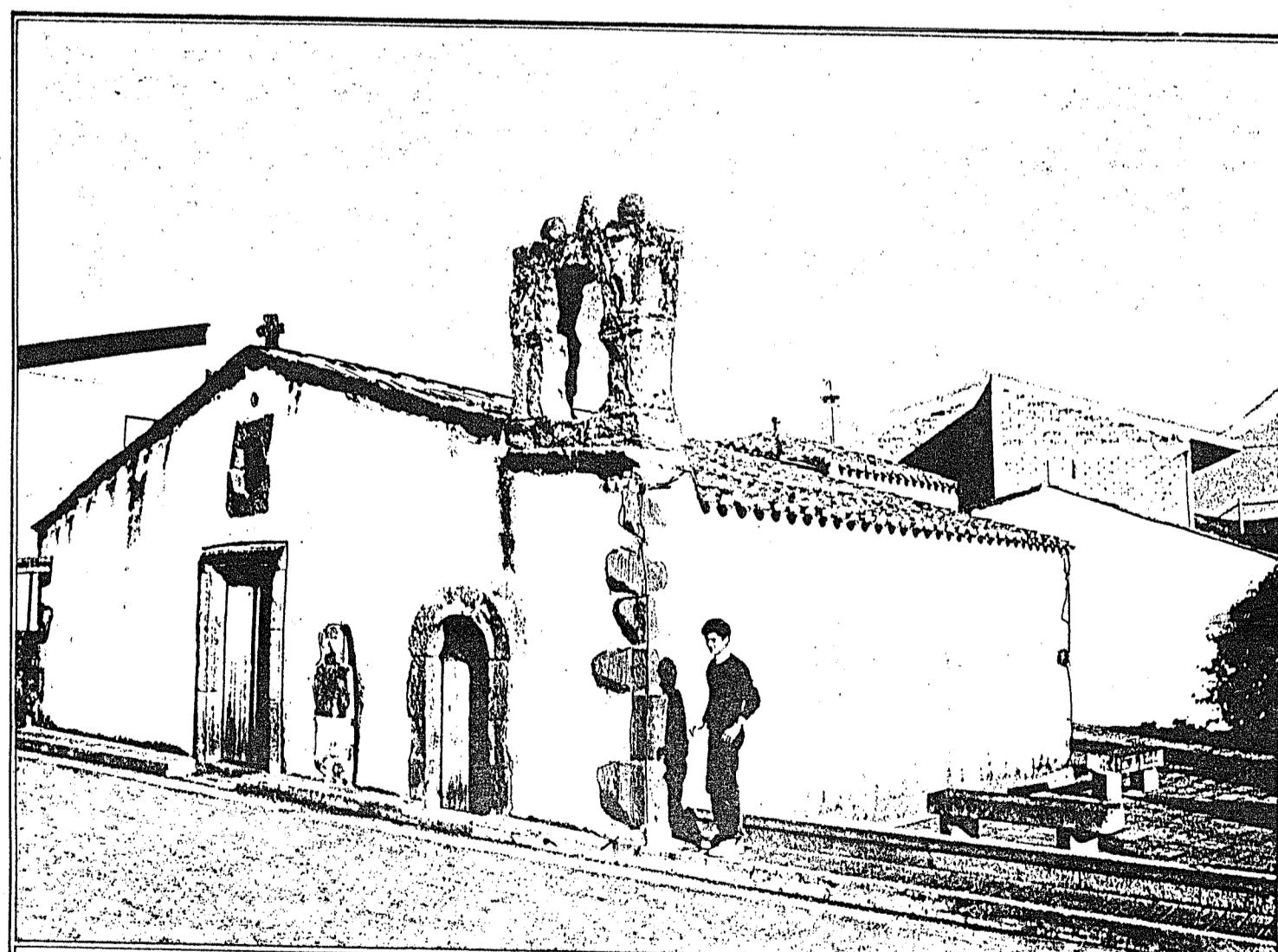


VIA SASSARI 13

LEGENDA

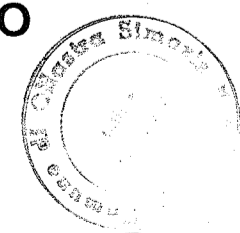
--- PROFILO REGOLATORE

--- PROFILO 1° PIANO (ARRETRATO)



COMUNE DI OLLASTRA SIMAXIS - OR

PIANO PARTICOLAREGGIATO
DELLA ZONA "A"



STUDIO TECNICO
Dott. Ing.
FRANCESCO SECHI
Via Lussu s.n. - Oristano
Tel. 70325 - 70147
Partita I.V.A.
0000230954

PROSPETTI - DAL N.4 AL N.14

TAV. 8b

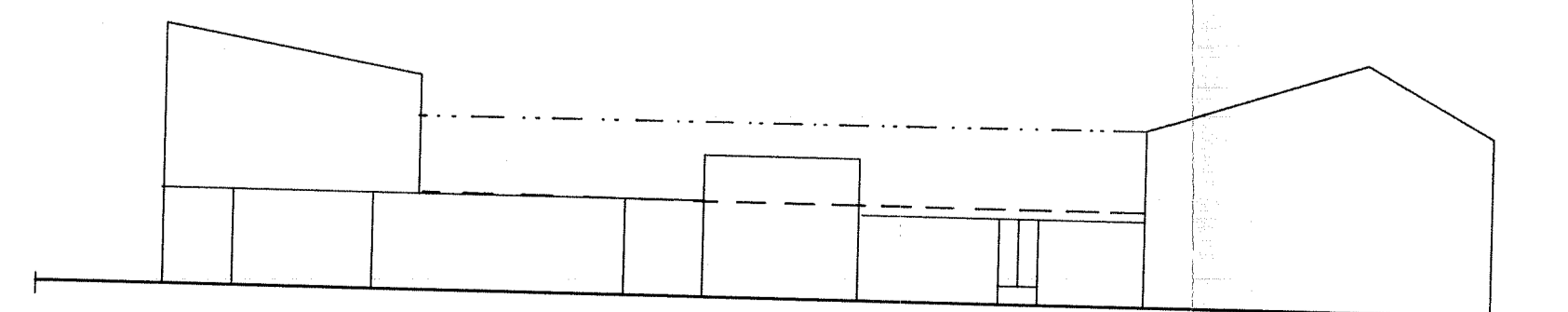
IL PROGETTISTA (Ing. Francesco Sechi)

SCALA: 1:200

IL SINDACO (Rag. Dario Sardu)

DATA: 15 GIU. 1990

IL SEGRETARIO COMUNALE
GIUSEPPE SCHIACCHIAPIA



VIA S. SATTA 9



VIA SASSARI 14