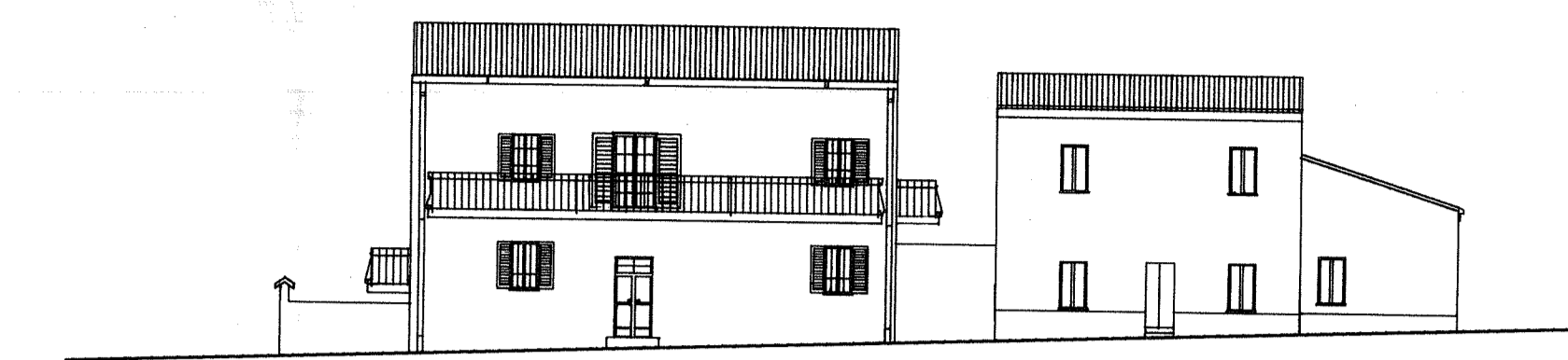
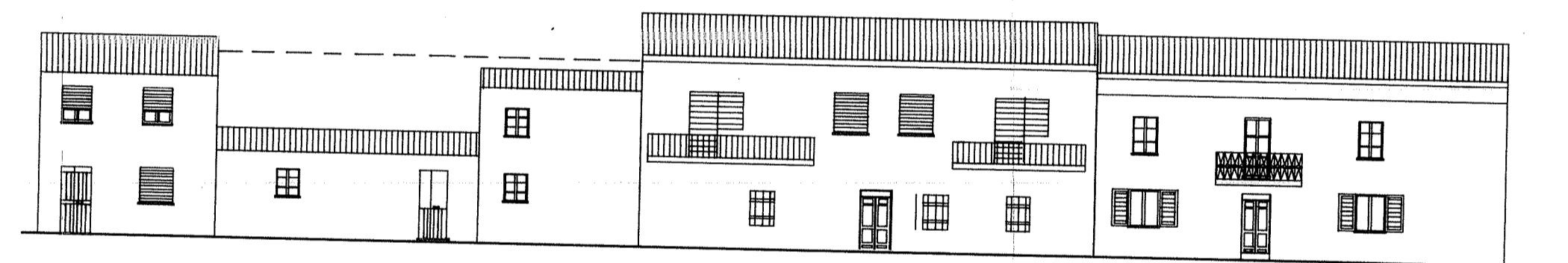


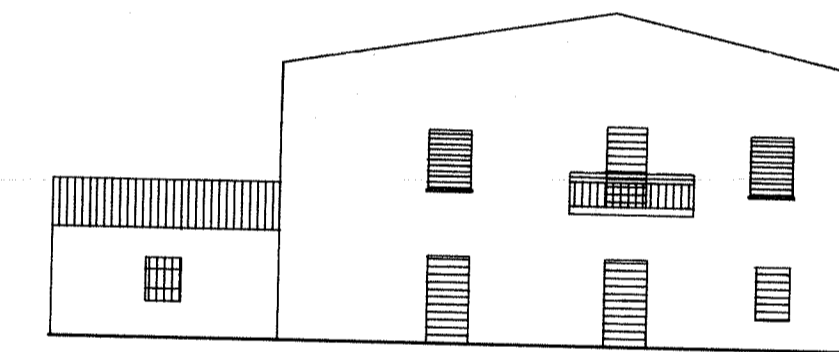
PIAZZA REPUBBLICA 15



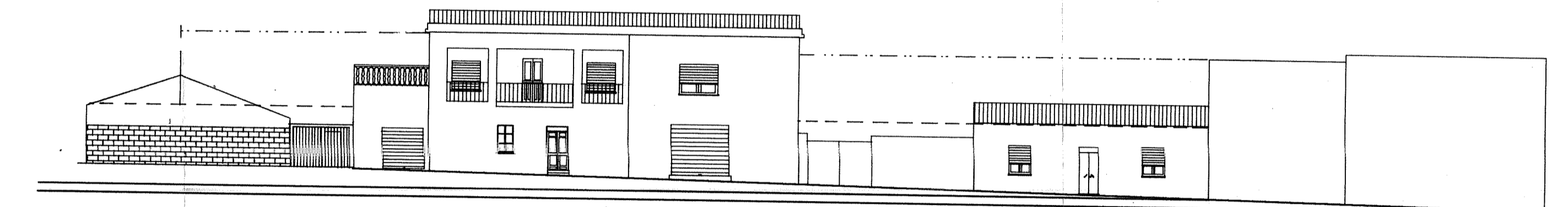
VICO S. MARCO 21



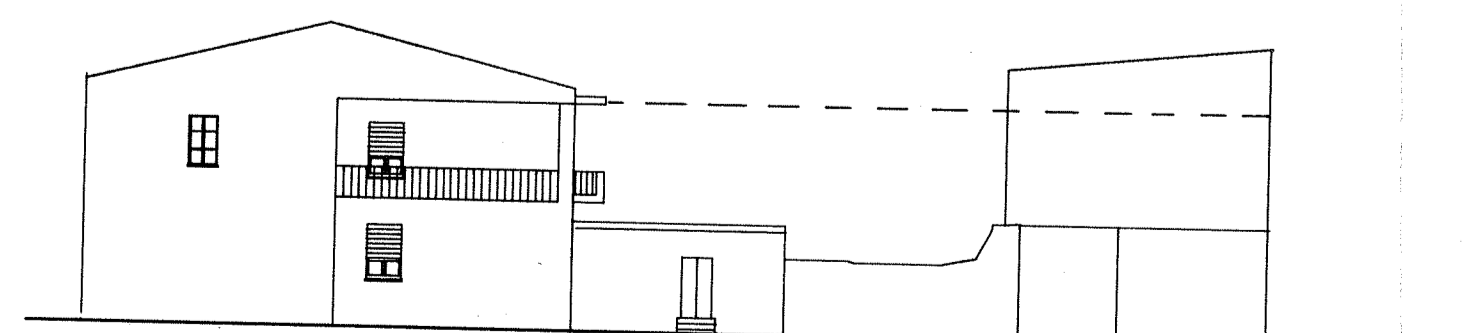
PIAZZA REPUBBLICA 16



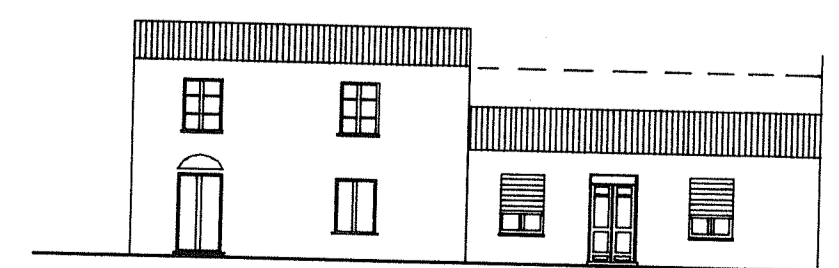
VIA LAMARMORA 19



VIA E VICO S. MARCO 22



VIA LAMARMORA 17



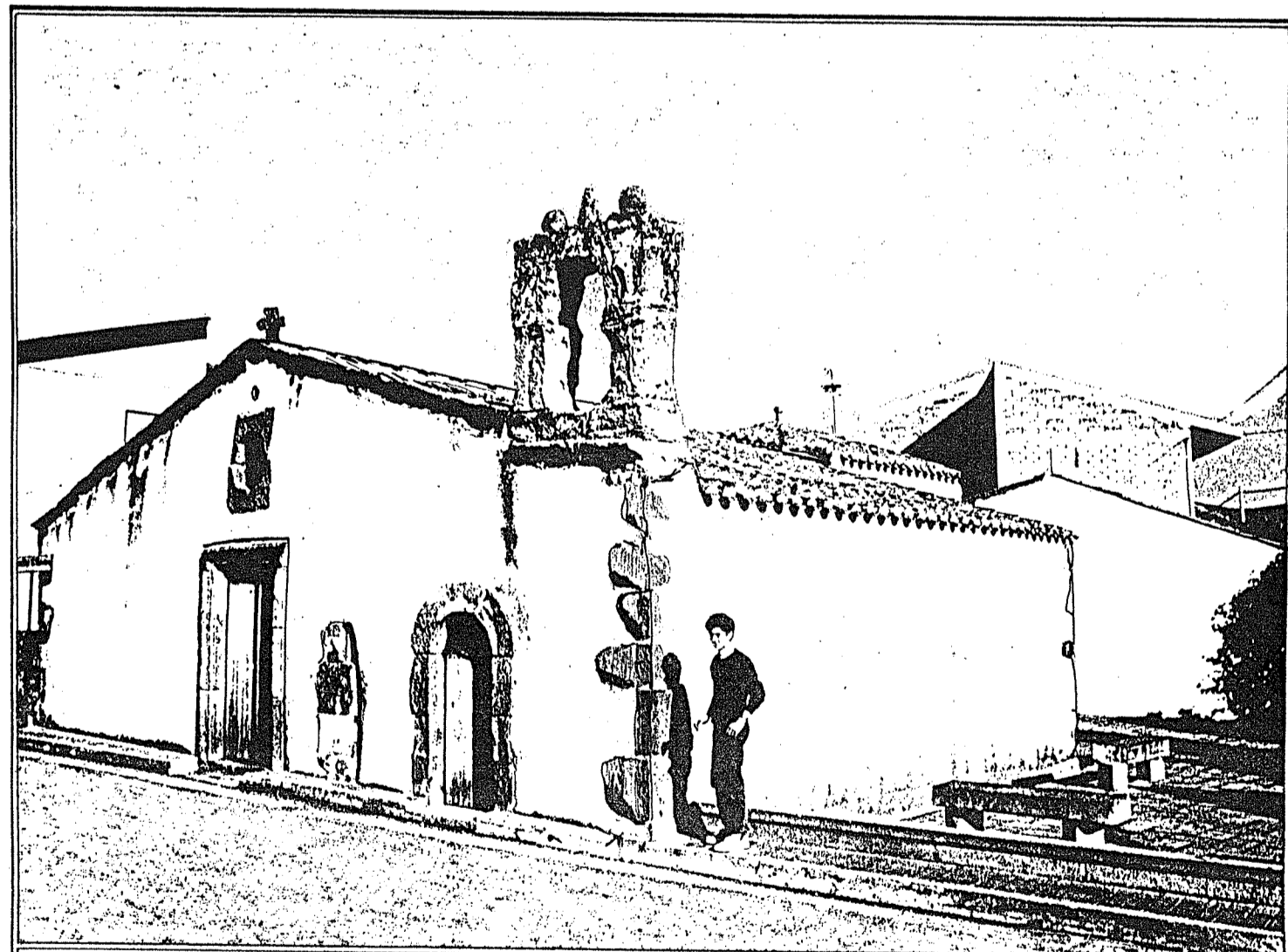
VIA S. SEVERA 20



VICO S. MARCO 23

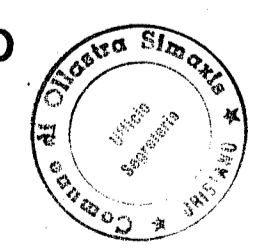
LEGENDA

- PROFILO REGOLATORE
- PROFILO 1° PIANO (ARRETRATO)



COMUNE DI OLLASTRA SIMAXIS - OR

PIANO PARTICOLAREGGIATO  
DELLA ZONA "A"



STUDIO TECNICO  
Dott. Ing.  
**FRANCESCO SECHI**  
Via Lami s.n. - Ollastro  
Tel. 79325 - 79147  
Partita I.V.A.  
00008830954

PROSPETTI - DAL N.15 AL N.23

**TAV. 8c**

IL PROGETTISTA (Ing. Francesco Secchi)

SCALA: 1:200

IL SINDACO (Mag. Dario Sandu)

DATA: 15 GIU. 1990

IL SEGRETARIO COMUNALE  
GHERESCHI D. SASSI (MAG. ROSARIA)